

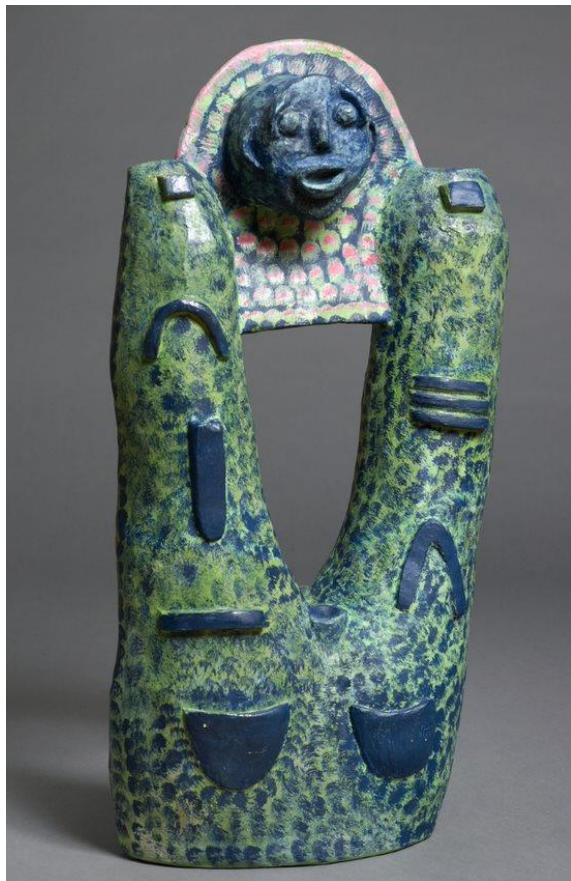
# the Whitworth

## Audio Descriptions transcript

April 2022

### AUDIO DESCRIPTIONS

Audio descriptions of artworks from the collection of the Whitworth, The University of Manchester.



**AUDIO DESCRIPTION:** Memory of a Soldier (Unknown) by Dusan Kusmic (1925-1990)

**All of the Audio Descriptions are available to listen to at:**

<https://aplacebetweenthetrees.com/audio-description/>

**Social tags:**

**Instagram** – @whitworthart

**Twitter** – @whitworthart

**Hashtag** – #WhitworthAudioDescriptions #TheWhitworthAtHome #GalleryInThePark

The sculpture appears to sit on an entirely grey background and surface, with light projecting from the south-east side of the image, casting darker grey shadows, north-west behind the sculpture.

Before you is a moss-green coloured background with small, azure, blue brush-marks, and raised geometrical shapes, that are irregularly dispersed along a two finger sculpture pointing upwards. The finger on the left has a straight edge along the top, with an azure blue square below the tip. The same coloured shapes continue below with equal spacing in the following sequence; an upside-down crescent, a vertical rectangle (slightly curved at the base end), a second rectangle but horizontal with straight edges and ending an inch from the base, two bottom halves of semi-circles with a slight depression from the top, side by side like knuckles on a hand. On the right semi-circle moving upwards, the shapes are; an upside down crescent with the centre pointed more upwards, three equal sized rectangles stacked above one another, with a thin gap between each, and finally a square parallel to the tip of the other finger.

The blue brush-marks, evenly-spaced, spiral around the two semi-circles in a regular pattern along the knuckles of the sculpture. As you move up the right finger, the pattern turns into a spotted-leopard like design, with a mixture of faint and heavy brush-marks, evenly distributed along the appendage. In contrast, the left finger has far fewer brush-marks that are sporadically distributed along the surface. Brush-marks are still a mixture of faint and heavy tones.

Between the central space of the two fingers is an empty V-shaped filled space that reaches the base of where the two fingers and travel up to the first point of where the first joint at the top of your finger begins. From this area upwards, a small decorative figure establishes itself.

Connected between the tips of the two fingers sits an azure blue head in a spotted Egyptian headdress. Speckles of pink settle on spots of green paint, filling the azure blue canvas around the headpiece. The bottom section is made up of diamond-shapes with pink at the top point, green on the lower half and dark blue in the open spaces. At the top, a semi-circle curve of the headgear is lined with a pale pink rim, with intermittent patches of green and azure blue.

The head, like a small cylinder, protrudes through the centre of the headdress, displaying a face towards the viewer. Eyes embedded like marbles. Eye brows curved almost becoming a part of the edge of the head. A nose raised like a hollow log out of water. Lips inflated with a gaping mouth. And ears, half-way down the cylinder, curve outwards like a smooth arrowhead.

Dusan Kusmic (1925-1990) was a Yugoslavian artist whose work was considered as outsider art. He was self-taught, and created numerous sculptures throughout his life using his own imagination and refined skills. At the age of 23 he was imprisoned in a prison camp in Italy and began using food to create sculptures. Eventually he found his way to Dublin, Ireland, where he befriended Gerald Dicker and Pat O'Faolain where he was able to continue his art practice and eventually have his work exhibited.